

SentinelPro™ Diverter Trim and Shower Combination (Valve not included)

FEATURES:

- CPT-5401: Diverter Shower Valve Trim
- S-2272-E2: 2.0 GPM (7.6 L/min) Flow Rate Shower Head
- S-2500: Shower Arm and Flange

VALVE OPTIONS:

- CPV-TP-DV: Thermostatic/Pressure Balancing Diverter Valve
Sweat & Thread Connections
- CPV-TP-DV-PXC: Thermostatic/Pressure Balancing Diverter Valve
PEX F1807 Crimp Inlet Connections
- CPV-TP-DV-PXE: Thermostatic/Pressure Balancing Diverter Valve
PEX F1960 Cold-Expansion Inlet Connections

STOCK FINISHES:



PC

WARRANTY:

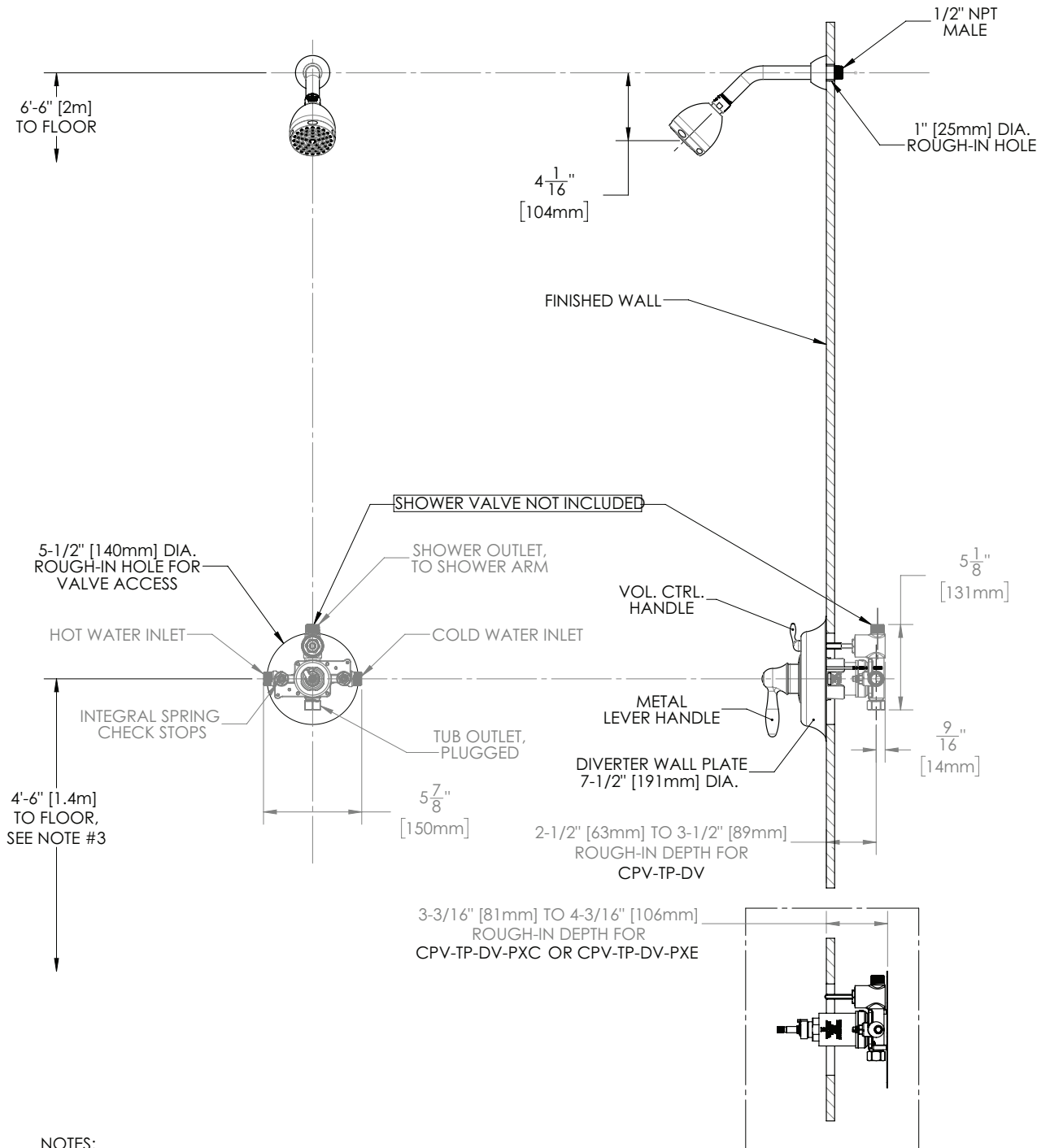
Visit www.speakman.com for full product warranty information

- See Speakman.com For Warranty Information



Information continues on next page

SentinelPro™ Diverter Trim and Shower Combination (Valve not included)



NOTES:

1. ALL DIMENSIONS ARE IN INCHES [MILLIMETERS] UNLESS OTHERWISE SPECIFIED AND ARE SUBJECT TO CHANGE WITHOUT NOTICE.
2. ALL INLETS AND OUTLETS ARE 1/2" FEMALE COPPER SWEAT AND 1/2" MALE NPT UNLESS OTHERWISE SPECIFIED.
3. FOR ADA MOUNTING LOCATIONS CONSULT ADAAG, ANSI A117.1, OR STATE REGULATIONS.

Architect/Engineer Approval Space:

P: 800-537-2107
 F: 800-977-2747
 W: WWW.SPEAKMAN.COM
 R: 02-DECEMBER 2019