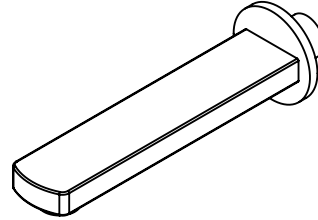




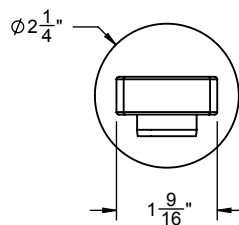
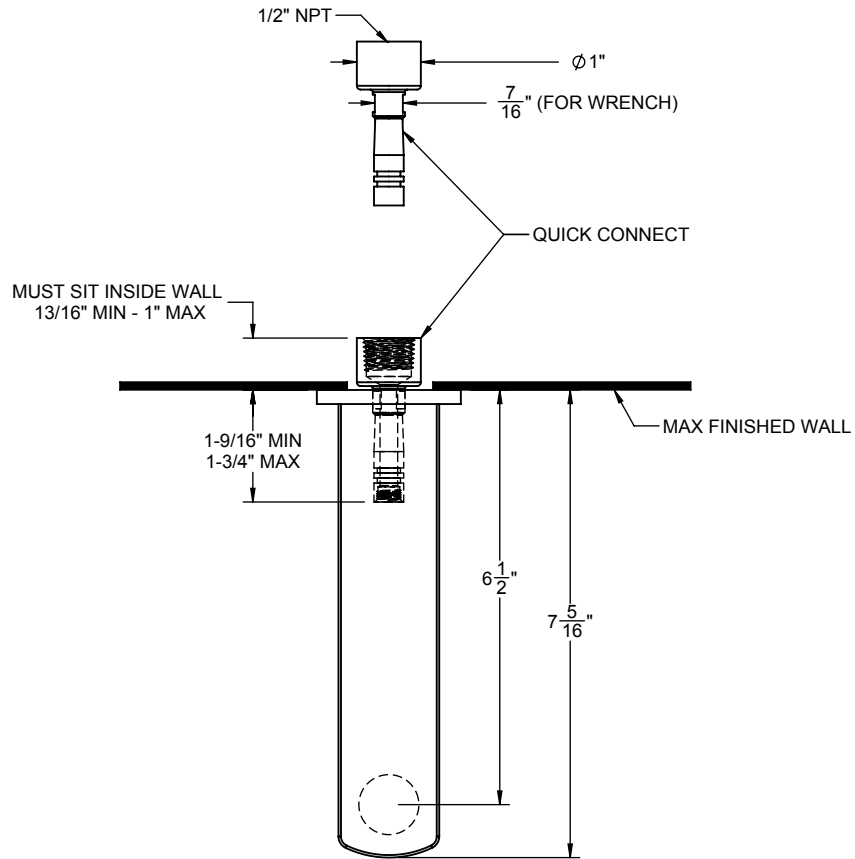
Features

- 6 1/2" wall to center of flow
- 10.0 gpm (37.8 L/m) max flow rate
- Quick connect
- All brass construction
- Over 30 finishes including 13 PVD finishes



Codes/Standards Applicable

- Product meets or exceeds the following:
- ASME A112.18.1/CSA B125.1



THROUGH-HOLE SPECIFICATIONS		
MIN	RECOMENDED	MAX
SPOUT: $\phi 1\text{-}1/4"$	$\phi 1\text{-}1/4"$	$\phi 1\text{-}5/8"$