

6042HWM – EVERYDAY BATHS

60 x 42 x 28 inches

SOAKER MODEL #6042HWM



FEATURES

- Alcove bath
- Integral arm rests
- Ergonomic backrest
- Integral tiling flange (3T)
- Integral skirt
- Slip-resistant textured bottom
- 8" wainscot
- Left or right hand drain
- Above-floor rough
- AcrylX™ applied acrylic surface
- Lifetime limited warranty

OPTIONS

- Designer drain, waste & overflow

AQUATIC ADVANTAGE

- National distribution
- 7 manufacturing facilities
- Private fleet
- Centralized customer service
- Field support

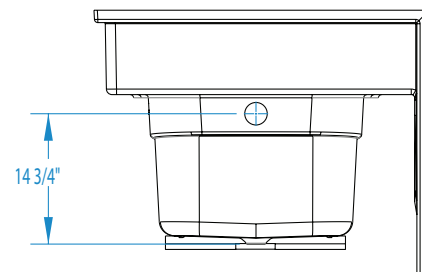
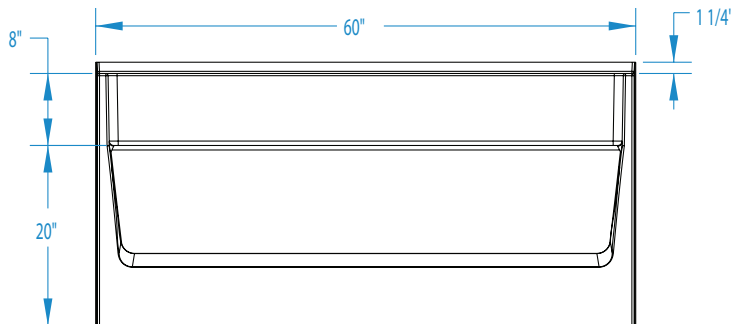
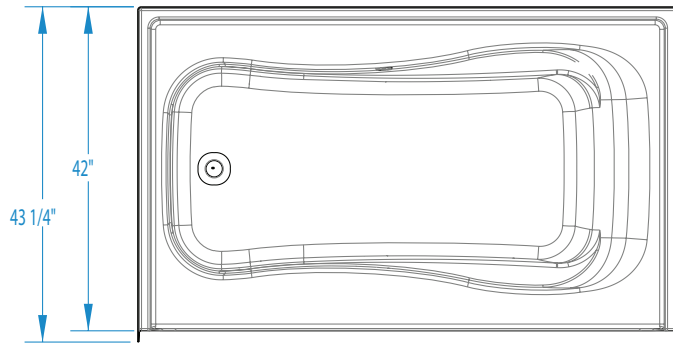
COLOR OPTIONS

Stock	Upgraded	Premium
White	Almond Biscuit/Linen Bone	Black Mexican Sand Sand Bar Sterling Silver



6042HWM

60 x 42 x 28
inches



AFR: Allows for above the floor installation of waste, overflow and drainage.

FEATURES lbs Dimensional Tolerance $\pm 3/8"$. Dimensions needed for site preparation should be measured from the unit. Aquatic assumes no responsibility for preparatory work.

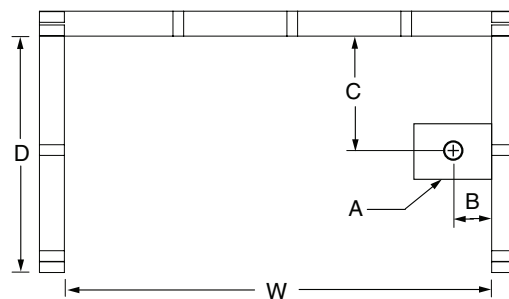
Model #	Material	Jets	Motor	Controls	Drain	Net Wt.	Pkg. Wt.
AFR Soaker #6042HWM	AcrylX™	0	-	-	LH or RH	84	89

DIMENSIONS

Specifications	inches
Width: Overall / Net	60
Depth: Overall / Net	43 1/4 / 42
Height: Overall / Net	29 1/4 / 28
Enclosure Opening	-
Skirt Height	20
Drain Rough-In (from Back Wall)	21
Drain Rough-In (from Side Wall)	2 1/2
Drain: Diameter / Clearance	2 / 3 3/4

FRAMING DIMENSIONS inches

Type	D Depth	W Width	H Height	A	B	C
Alcove	43 1/4	60 1/8	19 3/4	Box Out	2 1/2	21



SUMP DATA

Top of Drain to Bottom of Overflow	Capacity to Overflow gal	Min. Operating Capacity gal	WIDTH @ centerline		DEPTH @ centerline	
			Top	Bottom	Top	Bottom
12 1/2	65	50	54	44	26	23